

# PAOLA NAVONE COLLECTION™

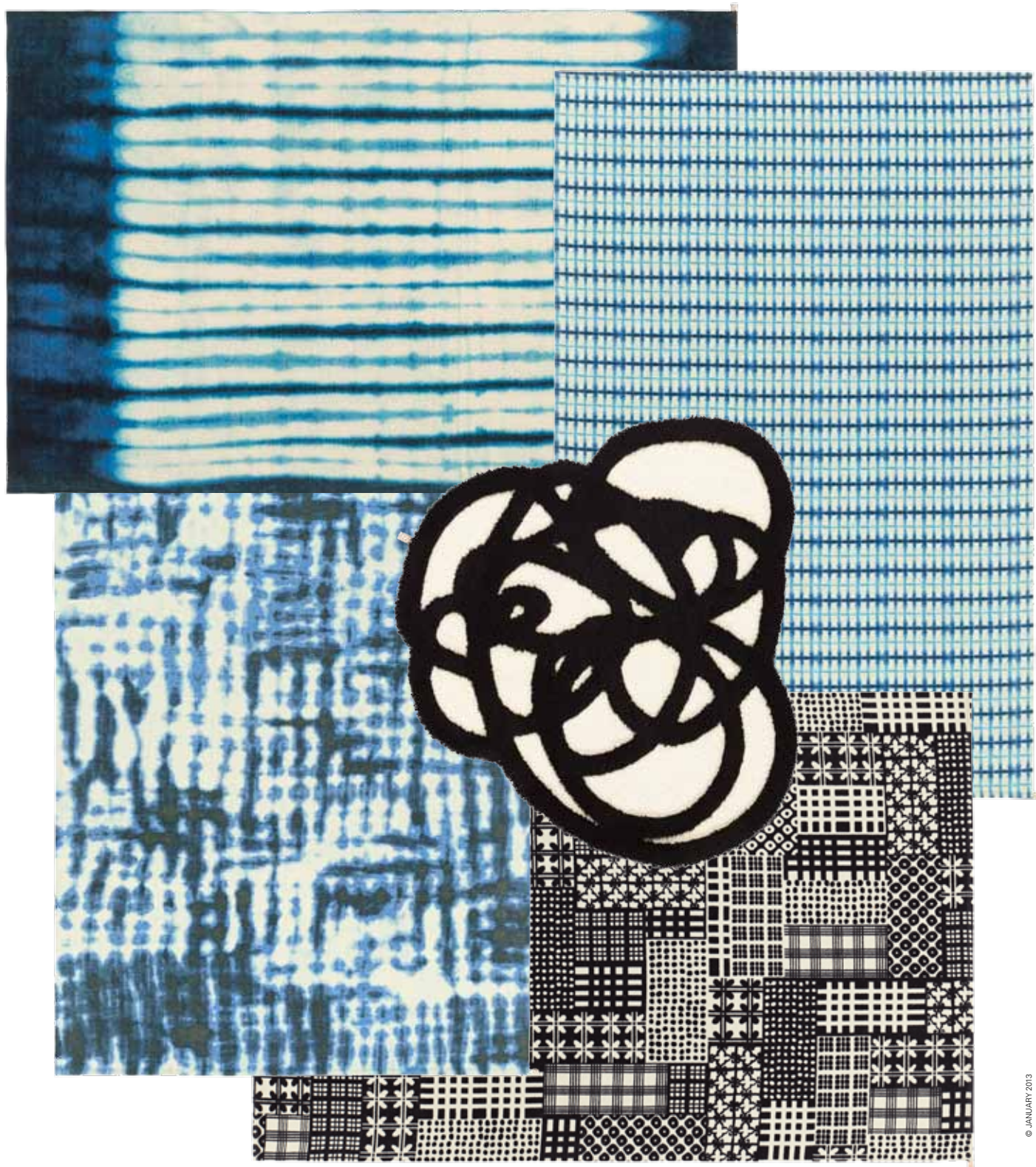
Design PAOLA NAVONE

HAND TUFTED RUGS IN *pure wool* AND *linen*, PRINTED RUGS IN *pure wool*

---



KASTHALL



# PRODUCT SPECIFICATIONS

**Crinkle** is a design by Paola Navone printed on Kasthall's woven Häggå rug, in pure wool. The design is like a tightly twisted cloth that has been dip dyed then opened and dried, resulting in a fluid striped decoration, with stripes that are soft and imprecise. The colour is "blue, that is never simply blue": Deep blue. Bright blue. Shaded blue. Indigo blue.

**Dye dye** is a design by Paola Navone printed on Kasthall's woven Häggå rug, in pure wool. The design is like a wrinkled cloth dipped in colour, then opened and dried, resulting in a decoration made by thick spots that have been enlarged out of scale. The colour is "blue, that is never simply blue". Dye Dye have been awarded as the Rug of the year 2012 in the Swedish Interior Magazine Residence.

**Fold** is a design by Paola Navone printed on Kasthall's woven Häggå rug, in pure wool. Its precise and graphic pattern is infinitely repeated – like a sheet of paper that has been folded millions of times, then opened and laid out with wrinkled thick graphics. Fresh. Deep. Bright. In white and blue colours.

**Patch** is a design by Paola Navone printed on Kasthall's woven Häggå rug, in pure wool. A tartan where all patterns are different, stripes and small checks, naïve dots, small archaic sketches and neolithic signs. The inspiration comes from details of things, both far and nearby, that have travelled throughout the time and the world. The result is a mix of patterns, all different, put together without any rule to create a fanciful mosaic reminiscent of fragments of ceramics from Morocco or Sicily.

## Crinkle/Dye Dye/Fold/Patch:

**Product type:** Woven rug in pure wool

**Weft material:** 100% wool

**Warp material:** 100% linen

**Total height:** approx. 5 mm

**Total weight:** approx. 2200 g/m<sup>2</sup>

**Sizes:** 160x240 cm or 195x300 cm

**Print:** Digital print



Wear classification:  
(EN 1307) Class 32  
Commercial General



Wear classification:  
(EN 1307) Class 23  
Domestic heavy



Burning classification:  
(EN 13501-1) Cfl-s1

Colour fastness to water = grade 4, Colour fastness to rubbing wet = grade 4  
Colour fastness to rubbing dry = grade 4/5, Colour fastness to light = grade >7

LEED: These rugs have LEED certification – CRI Green label Plus

**Doodle** is a handtufted long-pile rug in wool and linen designed by Paola Navone. It is "a rug with no exact shape, an abstract and absent-minded sketch, designed with a quick hand, with thick brush strokes". The result is a doodle ironically out of scale, like a fanciful ideogram in black on white, like ink on paper.

**Product type:** Hand tufted bouclé and cut pile rug in pure wool and linen

**Pile material:** 80% wool, 20% linen

**Base fabric:** Polyester

**Backing material:** Polypropylene and recycled yarn

**Adhesive:** Acrylic polymer

**Size and shape:** Round: Ø 120 cm or 170 cm

**Number of threads per stitch:** 3

**Pile height:** approx. 11 mm / 22 mm

**Pile weight:** approx 2750 g/m<sup>2</sup>

**Total height:** approx. 15 mm / 26 mm

**Total weight:** approx. 3600 g/m<sup>2</sup>



Burning classification:  
(EN 13501-1) Cfl-s1

LEED: Doodle has LEED certification - CRI Green label Plus

# PRODUCT SPECIFICATIONS

## CARE ADVICE HAND TUFTED RUGS

To further extend the lifetime of your rug, Kasthall recommends a regular maintenance so that the rug may retain its shape and appearance. If you have a light, single-colour rug you will need to care for it more often than a darker, patterned rug. Thorough vacuum cleaning is the best, most economical and environmentally friendly cleaning method. Beating or shaking a rug may damage the fibers. Note that it is quite normal for the rug to lose individual fibers when used, these are excess fibres and it does not affect the general quality of the rug. If you want to get rid of excess fibres faster, you can vacuum the rug daily for an initial period. It is most efficient to vacuum the rug one direction at a time. Please note that our hand tufted rugs made in linen are sensitive to water. There is a risk that the yarn becomes untwisted and slightly stiff when the rug dries, so be careful with the amount of water/liquid used when removing stains.

## CARE ADVICE WOVEN RUGS

To further extend the lifetime of your rug, Kasthall recommends a regular maintenance so that the rug may retain its shape and appearance. If you have a light, single-colour rug you will need to care for it more often than a darker, patterned rug. It is also a good idea to use a rug underlay to prolong the life of your woven rug and prevent it from slipping on any type of floor. Thorough vacuuming is the best, most economical and environmentally friendly method of cleaning. Beating or shaking a rug may damage the fibers. It is most efficient to vacuum the rug one direction at a time.

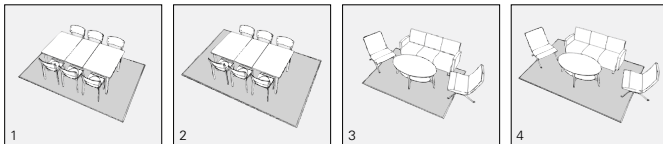
## CLEANING ADVICE

Kasthall recommends professional cleaning of all our rugs. All rugs should be washed flat using water (not machine washed or dry-cleaned) and then dried flat. It is very important to provide good ventilation during the drying process. Shrinkage of around 3-5% may be expected. For our hand tufted long-pile rugs made in 100% linen, see separate care advise. At [www.kasthall.com](http://www.kasthall.com) you can read more about our materials, how to look after your rug and our stain guide.

## CHOOSING A RUG

Choose the characteristics of the rug, its colour and design to suit the space in which it will be laid. If it is to be laid in a hall, for example, you may choose a type of rug that is more resistant to wear, and a colour that is a little darker and dirt-tolerant. Use a rug as a means of bringing together the rest of the interior. Decide whether you want to place a sofa on the rug or at its edge. If a rug is to be placed underneath a dining table, add at least 60 cm all round the table to allow space for pulling out the chairs.

Hand tufted rugs are suitable for creating cosy environments with warm acoustics. Depending on the quality, hand tufted rugs can work equally well in domestic settings and public spaces. Ideal for use in living rooms, bedrooms and in lounge environments and hotel rooms.



Examples of commonly used rug sizes:

1. Dining table with 6 chairs: rug size 200 x 300 cm
2. Dining table with 6 chairs: rug size 250 x 350 cm
3. Three-seat sofa with armchairs: rug size 170 x 240 cm
4. Three-seat sofa with armchairs: rug size 200 x 300 cm

## OTHER INFORMATION

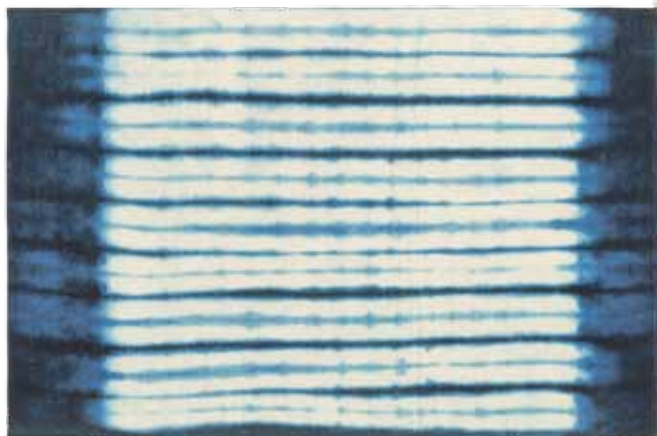
- Depending on the materials used and the rug-making process, dimensions may vary by up to  $\pm 2\%$  so please state maximum or minimum dimensions when placing your order.
- Note that all rugs from Kasthall are made from natural materials. Variations in colour and texture can therefore arise between batches of yarn and dye baths.

## ENVIRONMENT AND SOCIAL RESPONSIBILITY

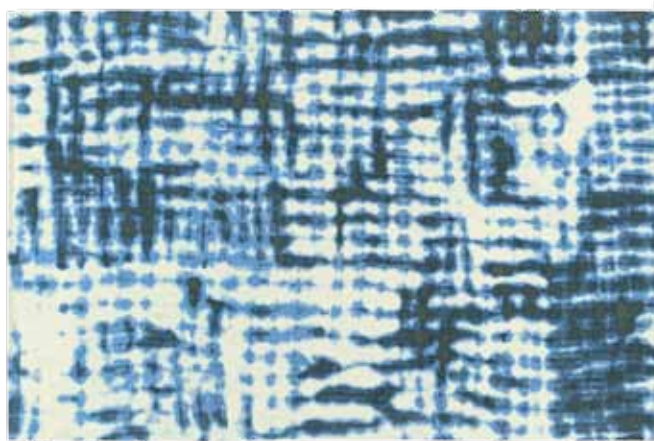
At Kasthall environmental work is a very natural part of what we do and what we stand for – today and for generations to come. Naturally we are certified according to the environmental standard ISO14001, and many of our products bear the symbols of LEED, BASTA etc. These certificates confirm our continuous efforts. All our rugs are made to order in Sweden, using the finest renewable natural materials. Our working environment reflects the creativity and quality that we strive for – in design, materials and manufacture. Read more about our environmental work and philosophy at [kasthall.com](http://kasthall.com)



PRINTED RUGS:



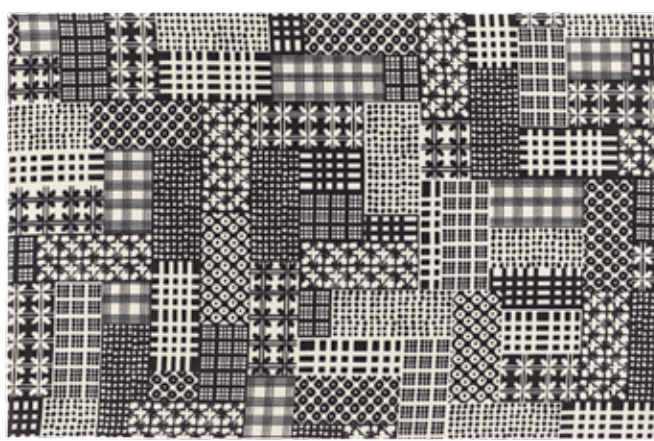
**Crinkle** 160x240 cm or 195x300 cm



**Dye Dye** 160x240 cm or 195x300 cm

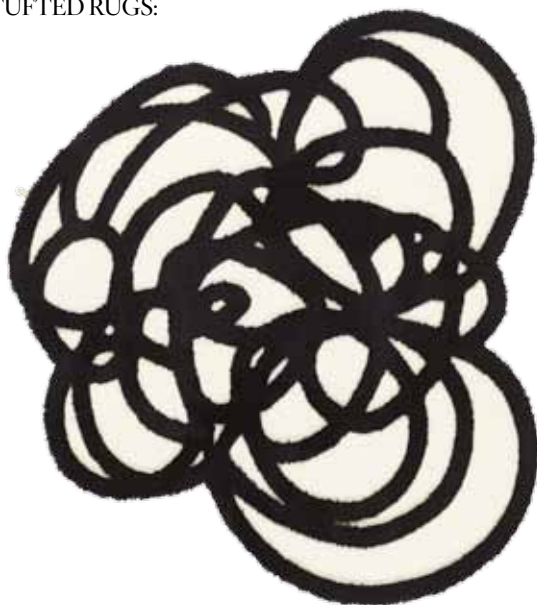


**Fold** 160x240 cm or 195x300 cm



**Patch** 160x240 cm or 195x300 cm

HAND TUFTED RUGS:



**Doodle** Ø 170 cm



**Doodle** Ø 120 cm





Patch and Doodle



**Paola Navone** is an advocate of unique artefacts and a champion of craftsmanship. The breadth of her design portfolio is as impressive as her drive to push the boundaries of her profession. Paola Navone is an inimitable designer whose range includes furniture, jewellery, clothing and ceramics. She has experimented with almost every role in the design spectrum: from architect to art director and interior decorator. We at Kasthall are very proud of our Paola Navone collection – a successful meeting between Paola's highly individual design idiom and Kasthall's craftsmanship and exclusive natural materials.



Crinkle, Dye Dye and Fold



Showrooms in MILAN • NEW YORK • STOCKHOLM • GOTHENBURG

KASTHALL HQ SWEDEN

Phone +46 320 20 59 00, Fax +46 320 20 59 01  
 Fritslavägen 42, Box 254, SE-511 23 Kinna, Sweden  
 info@kasthall.se

For the latest updates of our collection, please visit [www.kasthall.com](http://www.kasthall.com)

All the designs shown here are protected under law. Kasthall have the property rights and distribution rights worldwide. Copying will be prosecuted.



KASTHALL