



Polder Sofa

Design —
Hella Jongerius

vitra.



A Dutch polder is land reclaimed from the sea using dykes and drainage ditches. The extremely fertile land is typically chequered with lovely, verdant farm plots. The horizontal profile and contrasting tones of Polder Sofa evoke this iconic landscape.



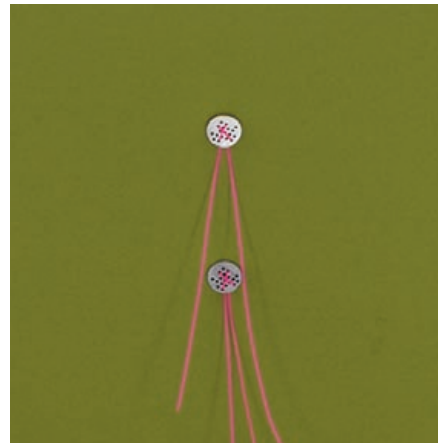
The long, low-slung body of the sofa serves as the platform for four voluminous bolster cushions covered with different fabrics in carefully matched colour tones.



Details

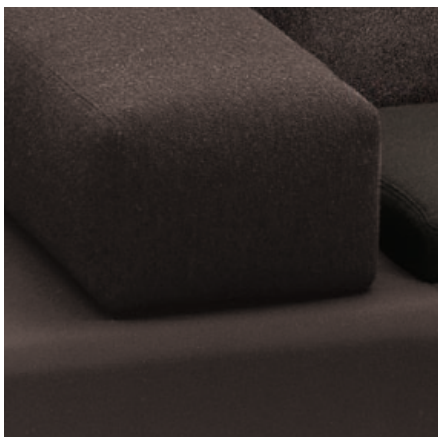


→ Buttons made of natural materials



→ Buttons fixed with high-tech thread

→ Armrest with sand weight



→ Carefully selected colour combinations

→ Leather version features coloured buttons



→ XL and XXL can be taken apart for transportation

4-5



→ Leather version features contrasting stitching

→ Available with a left-hand or a right-hand armrest



Design — Hella Jongerius

Polder Sofa

Fabric Combinations

Green



→ Polder Sofa XXL
left-hand armrest

Dark Brown*



→ Polder Sofa XL
right-hand armrest

Cream*



→ Polder Sofa XL
left-hand armrest

Anthracite



Materials

Wooden frame with belt upholstery, backrest cushions: polyurethane chips and microfibres, textured surface and seat cushion: polyurethane foam and polyester wool, armrest with sand weights, buttons made of natural materials.

→ Polder Sofa XS
right-hand armrest

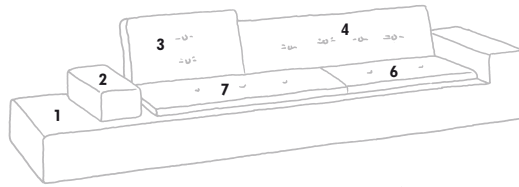
Red



→ Polder Sofa XXL
right-hand armrest

Hella Jongerius developed five versions of this play of colours and textures, which emphasises the asymmetry of the sofa. This contrast is accented by strikingly large upholstery buttons produced from different natural materials. Sewn to the cushions using a high-tech thread in bold colours, they provide idiosyncratic details which make each sofa unique. The Polder Sofa is available in three sizes: XXL, XL and XS.

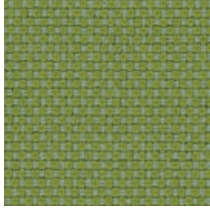
Fabric Combinations



Polder Sofa XXL

Green

Buttons: dark and light
Thread: pink



1 / Spirit green



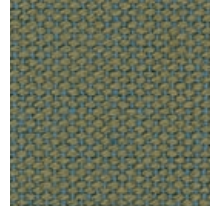
2 / Soft green



3, 8 / Steelcut green



4, 5 / Soft light green



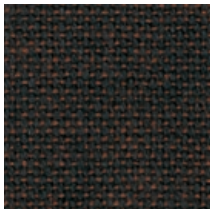
6, 9 / Lazio green



7 / Tonus sea green

Dark Brown*

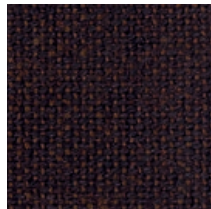
Buttons: light
Thread: red



1 / Spirit brown



2 / Tucana Bouclé dark brown



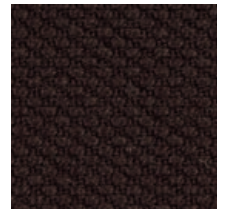
3 / Lazio dark brown



4, 9 / Soft dark brown



5, 7 / Tonus brown



6, 8 / Steelcut dark brown

Cream*

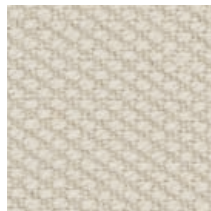
Buttons: light
Thread: blue



1 / Nova beige



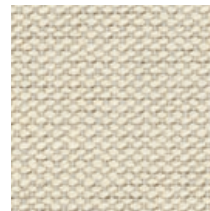
2 / Soft camel



3, 8 / Steelcut pastel grey



4, 5 / Soft ivory

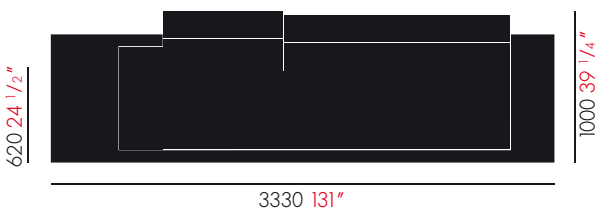


7 / Lazio cream/light grey

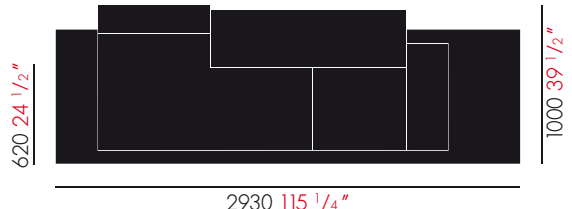


6, 9 / Soft natural wool grey

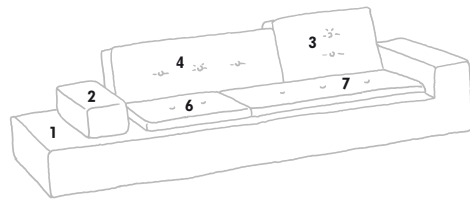
XXL



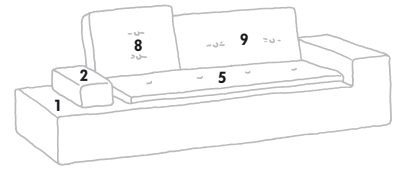
XL



*Not available for the UK domestic furniture market



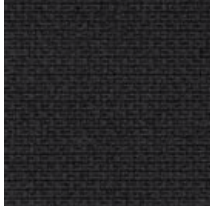
Polder Sofa XL



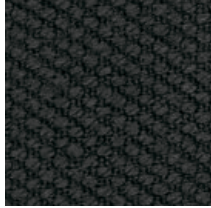
Polder Sofa XS

Anthracite

Buttons: dark
Thread: black



1 / Spirit
black



2 / Steelcut
anthracite



3, 8 / Hallingdal
dark grey



4, 9 / Soft
black



5, 7 / Tonus
black

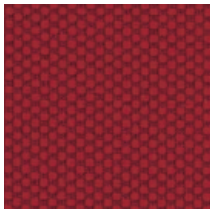


6 / Soft
anthracite

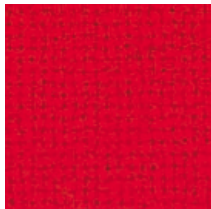
8-9

Red

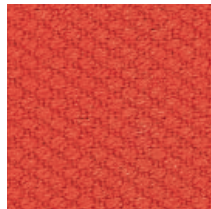
Buttons: dark and light
Thread: white



1 / Spirit
red



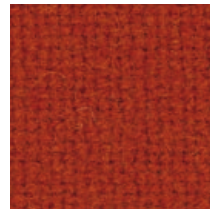
2 / Tonus
red



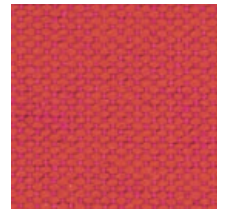
3 / Steelcut
orange



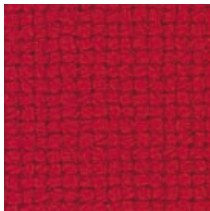
4, 9 / Soft
red



5, 6 / Tonus
oriental red



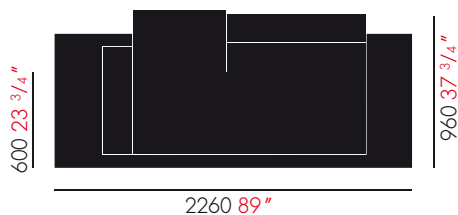
7 / Lazio
coral



8 / Hallingdal
red
(Polder XS only)

Design — Hella Jongerius

XS



Polder Sofa

Leather Combinations

Dark Brown, red/orange



→ Polder Sofa XS Leather
left-hand armrest

Dark Brown, natural



→ Polder Sofa XS Leather
right-hand armrest

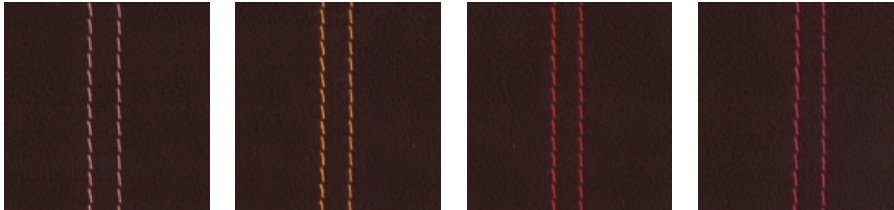
White



→ Polder Sofa XS Leather
left-hand armrest

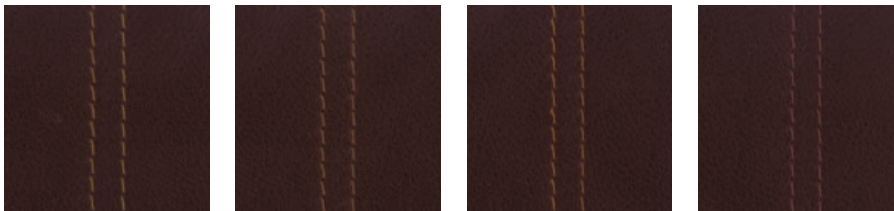
Dark Brown, red/orange

Buttons: coloured, topstitching in shades of red
Thread: red/orange



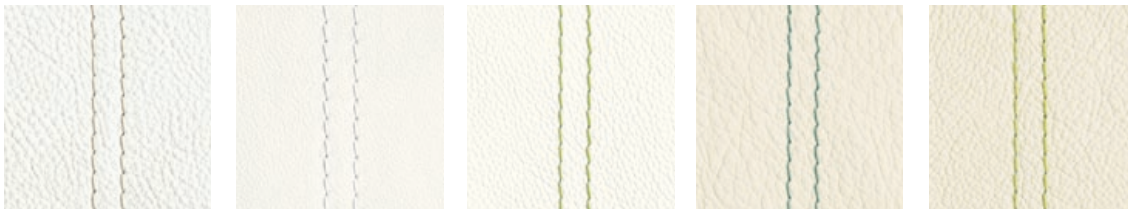
Dark Brown, natural

Buttons: dark, topstitching in shades of brown
Thread: various shades of brown

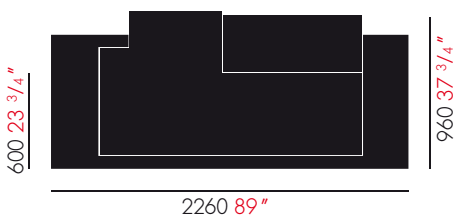


White

Buttons: light, topstitching in shades of green and white
Thread: various shades of green and white



XS



The Polder Sofa in leather varies the composition of the fabric version in more ways than one. On the versions upholstered throughout with dark brown leather, the concept of different colour combinations is transferred to the decorative buttons and topstitching – either in lively, expressive shades of bright red and orange, or in more restrained natural hues. By contrast, an elegant white version of the Polder Sofa is a composition of various leathers in finely coordinated shades of white, accentuated by white mother-of-pearl buttons and turquoise topstitching.

By combining the classic luxury of leather upholstery with eye-catching details, the Polder Sofa combines lasting qualities with a fresh, contemporary attitude.

Materials

Wooden frame with belt upholstery, backrest cushions: polyurethane chips and microfibres, textured surface and seat cushion: polyurethane foam and polyester wool, armrest with sand weights, buttons made of natural materials, cover: leather.







Photographs: Lena Amuat,
Nicole Bachmann, Peter van Bolhuis/
Pandion aerials, Isabel Truniger



**“My design philosophy for making furniture and trying to shape a new home is: Form follows feeling.”
– Hella Jongerius**



Hella Jongerius was born in the Netherlands and studied at the Academy of Industrial Design in Eindhoven. For many years she was a member of the well-known Dutch design movement Droog. In 2000 she established her own design studio, Jongeriuslab, in Rotterdam.

A central focus of her work is to find the balance between a mass-produced industrial product and a unique handcrafted object. This process redefines the borders of both approaches, resulting in new products with individual identities. Jongerius' work in the fields of furniture, textiles and ceramics combines innovative manufacturing methods with techniques and motifs from traditional handicrafts.



www.vitra.com
© vitra 2010



vitra.