

# IPANEMA

JEAN-MARIE MASSAUD (2015)



## DESCRIPTION

The Ipanema collection is enlarged by a system of chairs in evolution. Style that combines simplicity and originality, lightness and practicality. The extremely elegant and simple shapes of this chair speak softly of its refinement.

**Poliform**

# IPANEMA

JEAN-MARIE MASSAUD (2015)



## TECHNICAL DESCRIPTION

### Typology

chair

### Structure

solid wood

### Seat/Backrest

flexible moulded polyurethane

### Features

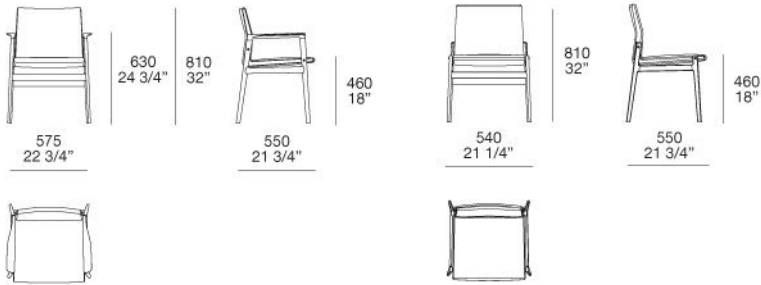
final cover in fabric/leather non removable

**Poliform**

# IPANEMA

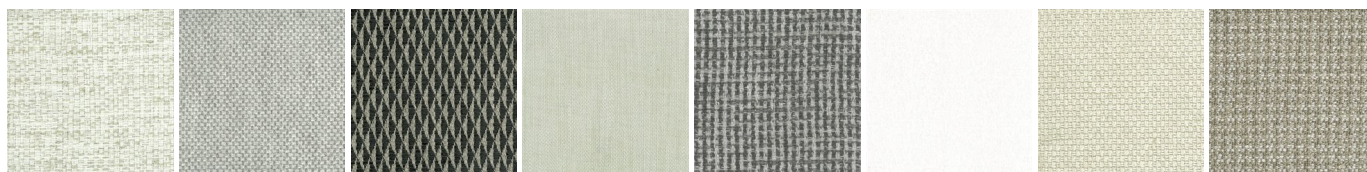
JEAN-MARIE MASSAUD (2015)

S39



# IPANEMA

FINISHINGS\SEAT\FABRIC (35)



CHIOS

ARGO

CORINTO

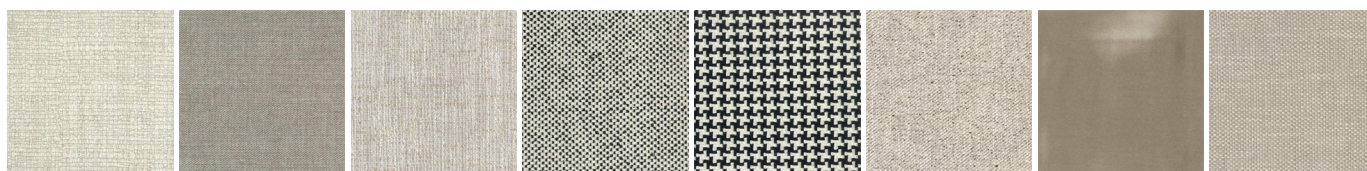
ITACA

MILOS

OLIMPIA

PAROS

ZANTE



SPARTA

SALFORD

ORLEANS

DERBY

LIMOGES

OXFORD

PERSIA

RABAT



MERIDA

HANNOVER

CORDOBA

CALEDONIA

NORWAY

ASPEN

ATLANTA

BERLINO



KYOTO

LIMA

MELBOURNE

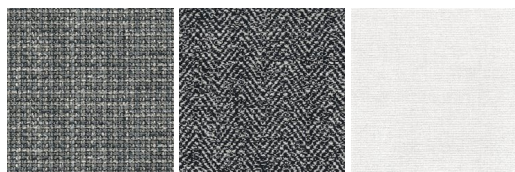
PORTO

REIMS

SAVANA

SIVIGLIA

INDRA - NEW



LIPSI - NEW

SKYROS -  
NEW

NAXOS - NEW

**Poliform**

# IPANEMA

FINISHINGS\SEAT\LEATHER (8)

							
NABUK LEATHER	VINTAGE LEATHER	SUPER LEATHER	PELLE SPECIAL	AGED- LOOKING LEATHER	COLORS LEATHER	SPRING LEATHER	SOFT LEATHER

# IPANEMA

FINISHINGS\STRUCTURE\WOODS (3)

		
SPESSART OAK	BLACK ELM	CENERE OAK