

Standard

Jean Prouvé, 1934/1950



Standard

Chairs take the most stress on their back legs, where they bear the weight of the user's upper body. The engineer, architect and designer Jean Prouvé incorporated this simple insight in his design for the Standard Chair: while steel tubing suffices for the front legs, since they are subject to less stress, the back legs are made of voluminous hollow sections that transfer the primary weight to the floor.

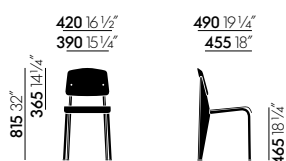
Standard SP model with seat and backrest in robust plastic.

Materials

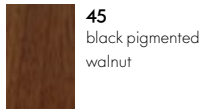
- **Seat and backrest:** natural oak, dark oak, walnut black pigmented.
- **Frame:** pressed sheet steel and tubular steel, powder-coated (smooth).

Standard is available in the classic version with seat and backrest in wood or as the

DIMENSIONS (in accordance with EN 1335-1)



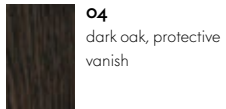
Standard Chair



45
black pigmented
walnut

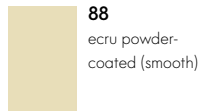


10
natural oak, with
protective varnish



04
dark oak, protective
varnish

Back and seat (Standard)



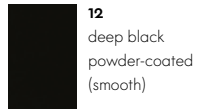
88
ecru powder-
coated (smooth)



80
coffee powder-
coated (smooth)



40
chocolate powder-
coated (smooth)



12
deep black
powder-coated
(smooth)



06
Japanese red powder-
coated (smooth)

Base (Standard)

