

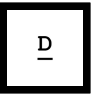
01 **MATTHEW HILTON**
365 ORSON DESK

DE LA ESPADA

MATTHEW HILTON



365 ORSON DESK



Orson desk, made in rich hardwood and cast iron, simply and quietly performs the task required, while remaining approachable and appealing to the senses. Three solid wood drawers provide ample storage for desk accessories, while three small compartments at the back of the desk provide an efficient and attractive cable management system. Accessories designed to complement the desk include two storage trays and a pencil holder which are available separately. Designed by Matthew Hilton for his eponymous brand, and manufactured by De La Espada craftsmen.

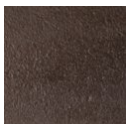
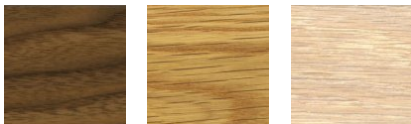
0
2



M
A
T
T
H
E
W

H
I
L
T
O
N

MATERIAL OPTIONS



SPECIFICATION

Available in American black walnut finished with a Danish oil or American white oak finished with a Danish oil or a white oil, and cast iron.

SIZE

w.140cm x d.80cm x h.74cm
height from floor to front of drawer: 66.5cm
height from floor to back of drawer 61.5cm
depth of drawer: 32cm
w.55 1/8" x d.31 1/2" x h.29 1/8"
height from floor to front of drawer: 26 1/6"
height from floor to back of drawer 24 1/5"
depth of drawer: 12 3/5"