

# TEKLA™

Design GUNILLA LAGERHEM ULLBERG  
HAND TUFTED RUG IN *pure wool AND linen*

---



KASTHALL





# PRODUCT SPECIFICATIONS

A multi-coloured rya rug in speckled, chromatic colours. The thick wool yarn gives the rug an impressing, rugged character. Inspired by parties, candy and confetti. The yarn and bold colours combined create a youthful, vigorous and slightly punky style.

**Product type:** Hand tufted rug in pure wool and linen

**Pile material:** 75% wool, 25% linen

**Base fabric:** Polyester

**Backing material:** Polypropylene and recycled yarn

**Adhesive:** Acrylic polymer

**Size and shape:** Any size and shape available. Or choose amongst our suggested sizes: 140x200 cm, 170x240 cm, 200x300 cm, 250x350 cm. Round: Ø 120 cm, Ø 240 cm.

**Number of threads per stitch:** 4

**Pile height:** approx. 40 mm

**Pile weight:** approx. 3600 g/m<sup>2</sup>

**Total height:** approx. 44 mm

**Total weight:** approx. 4500 g/m<sup>2</sup>



Burning classification:  
(EN 13501-1) Cfl-s1  
Cfl-s1 with flame retardant

LEED: Tekla has LEED certification – CRI Green label Plus

## CARE ADVICE HAND TUFTED RUGS

To further extend the lifetime of your rug, Kasthall recommends a regular maintenance so that the rug may retain its shape and appearance. If you have a light, single-colour rug you will need to care for it more often than a darker, patterned rug. Thorough vacuum cleaning is the best, most economical and environmentally friendly cleaning method. Beating or shaking a rug may damage the fibers. Note that it is quite normal for the rug to lose individual fibers when used, these are excess fibres and it does not affect the general quality of the rug. If you want to get rid of excess fibres faster, you can vacuum the rug daily for an initial period. It is most efficient to vacuum the rug one direction at a time. Please note that our hand tufted rugs made in linen are sensitive to water. There is a risk that the yarn becomes untwisted and slightly stiff when the rug dries, so be careful with the amount of water/liquid used when removing stains.

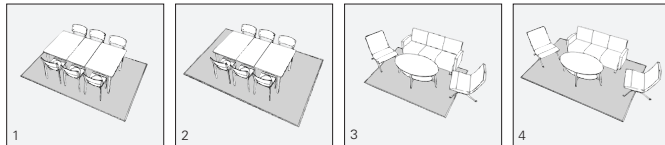
## CLEANING ADVICE

Kasthall recommends professional cleaning of all our rugs. All rugs should be washed flat using water (not machine washed or dry-cleaned) and then dried flat. It is very important to provide good ventilation during the drying process. Shrinkage of around 3-5% may be expected. For our hand tufted long-pile rugs made in 100% linen, see separate care advise. At [www.kasthall.com](http://www.kasthall.com) you can read more about our materials, how to look after your rug and our stain guide.

## CHOOSING A RUG

Choose the characteristics of the rug, its colour and design to suit the space in which it will be laid. If it is to be laid in a hall, for example, you may choose a type of rug that is more resistant to wear, and a colour that is a little darker and dirt-tolerant. Use a rug as a means of bringing together the rest of the interior. Decide whether you want to place a sofa on the rug or at its edge. If a rug is to be placed underneath a dining table, add at least 60 cm all round the table to allow space for pulling out the chairs.

Hand tufted rugs are suitable for creating cosy environments with warm acoustics. Depending on the quality, hand tufted rugs can work equally well in domestic settings and public spaces. Ideal for use in living rooms, bedrooms and in lounge environments and hotel rooms.



Examples of commonly used rug sizes:

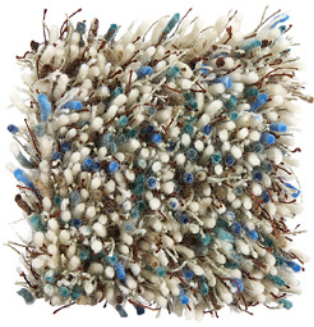
1. Dining table with 6 chairs: rug size 200 x 300 cm
2. Dining table with 6 chairs: rug size 250 x 350 cm
3. Three-seat sofa with armchairs: rug size 170 x 240 cm
4. Three-seat sofa with armchairs: rug size 200 x 300 cm

## OTHER INFORMATION

- Depending on the materials used and the rug-making process, dimensions may vary by up to  $\pm 2\%$  so please state maximum or minimum dimensions when placing your order.
- Note that all rugs from Kasthall are made from natural materials. Variations in colour and texture can therefore arise between batches of yarn and dye baths.

## ENVIRONMENT AND SOCIAL RESPONSIBILITY

At Kasthall environmental work is a very natural part of what we do and what we stand for – today and for generations to come. Naturally we are certified according to the environmental standard ISO14001, and many of our products bear the symbols of LEED, BASTA etc. These certificates confirm our continuous efforts. All our rugs are made to order in Sweden, using the finest renewable natural materials. Our working environment reflects the creativity and quality that we strive for – in design, materials and manufacture. Read more about our environmental work and philosophy at [kasthall.com](http://kasthall.com)



Mint 210



Menthol 330



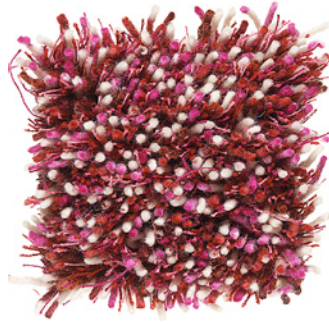
Violet 621



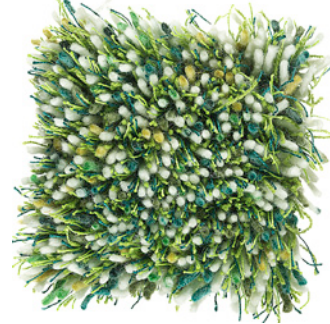
Fudge 860



Toffee 810



Raspberry Swirl 100



Apple Sour 310



Salmiak 550



Liquorice 510



Adidas HQ, Stockholm –  
Tekla Apple Sour in lobby



One year after its launch, our hand tufted rug Tekla has taken the world by storm – it is already one of Kasthall's top selling products and has just been awarded the Swedish Design Award (in competition with such diverse products as mobile phones and bicycles!). When Design S/Swedish Design Awards was distributed for the second time, nineteen products were nominated and ten awarded the grand prize "Design S", amongst them Tekla. The jury statement said: Hand-tufted rug in a unique combination of variegated, felted wool yarn plus multi-coloured fine wool and flax yarn. The range of colours is inspired by confetti and parties, and can withstand most things. Durable quality combined with beautiful design.

Showrooms in MILAN • NEW YORK • STOCKHOLM • GOTHENBURG

KASTHALL HQ SWEDEN

Phone +46 320 20 59 00, Fax +46 320 20 59 01  
Fritslavägen 42, Box 254, SE-511 23 Kinna, Sweden  
info@kasthall.se

For the latest updates of our collection, please visit [www.kasthall.com](http://www.kasthall.com)

All the designs shown here are protected under law. Kasthall have the property rights and distribution rights worldwide. Copying will be prosecuted.



KASTHALL