

# HAPPY™

Design GUNILLA LAGERHEM ULLBERG  
WOVEN RUG IN *pure wool* AND *linen*

---



KASTHALL



Happy – Summer Holiday 3001

# PRODUCT SPECIFICATIONS

Happy is a woven rug of wool and linen, colourful and charismatic, with stripes that both harmonise and contrast. A charming relative to our rug Doris, the name Happy comes from the lovely sensation you get when you walk on it. Gunilla Lagerhem Ullberg, our chief designer, named the five different colour combinations after feelings and life situations that she likes: Passion, Summer Holiday, Winter Night, Potato Digging and Harmony. Happy is a fantastic piece of handicraft. All the colour and yarn changes are painstaking work that requires patience and great professional skill from the Kasthall weavers.

**Product type:** Woven rug in pure wool and linen

**Weft material:** 90% wool, 10% linen

**Warp material:** 100% linen

**Size:** 90x240 cm, 170x240 cm, 200x300 cm. Other sizes upon request.

**Total height:** approx. 13 mm

**Total weight:** approx. 2700 g/m<sup>2</sup>



Wear classification:  
(1307) Class 31  
Commercial Moderate



Burning classification:  
(EN 13501-1) Cfl-s1

LEED: Happy has LEED certification – CRI Green label Plus

## CARE ADVICE WOVEN RUGS

To further extend the lifetime of your rug, Kasthall recommends a regular maintenance so that the rug may retain its shape and appearance. If you have a light, single-colour rug you will need to care for it more often than a darker, patterned rug. It is also a good idea to use a rug underlay to prolong the life of your woven rug and prevent it from slipping on any type of floor. Thorough vacuuming is the best, most economical and environmentally friendly method of cleaning. Beating or shaking a rug may damage the fibers. It is most efficient to vacuum the rug one direction at a time.

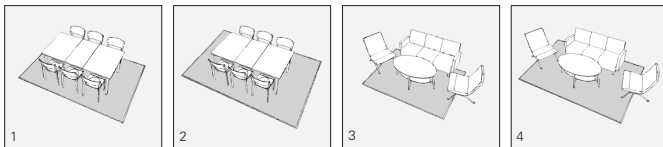
## CLEANING ADVICE

Kasthall recommends professional cleaning of all our rugs. All rugs should be washed flat using water (not machine washed or dry-cleaned) and then dried flat. It is very important to provide good ventilation during the drying process. Shrinkage of around 3-5% may be expected. For our hand tufted long-pile rugs made in 100% linen, see separate care advise. At [www.kasthall.com](http://www.kasthall.com) you can read more about our materials, how to look after your rug and our stain guide.

## CHOOSING A RUG

Choose the characteristics of the rug, its colour and design to suit the space in which it will be laid. If it is to be laid in a hall, for example, you may choose a type of rug that is more resistant to wear, and a colour that is a little darker and dirt-tolerant. Use a rug as a means of bringing together the rest of the interior. Decide whether you want to place a sofa on the rug or at its edge. If a rug is to be placed underneath a dining table, add at least 60 cm all round the table to allow space for pulling out the chairs.

Woven rugs are suitable for most settings, both public and private. Ideal for use in domestic settings such as dining rooms, halls and kitchens, and in retail environments, conference premises and corridors. May also be laid as a carpet.



Examples of commonly used rug sizes:

1. Dining table with 6 chairs: rug size 200 x 300 cm
2. Dining table with 6 chairs: rug size 250 x 350 cm
3. Three-seat sofa with armchairs: rug size 170 x 240 cm
4. Three-seat sofa with armchairs: rug size 200 x 300 cm

## OTHER INFORMATION

- Depending on the materials used and the rug-making process, dimensions may vary by up to  $\pm 5\%$  so please state maximum or minimum dimensions when placing your order.
- Note that all rugs from Kasthall are made from natural materials. Variations in colour and texture can therefore arise between batches of yarn and dye baths.
- Rugs should be laid on an underlay that prevents them from moving on all types of flooring. This extends the life of the rug and reduces the risk of slipping.
- The use of backing fixes the dimensions of a rug and extends its life. This is recommended for rugs that are wider than 200 cm and/or those larger than six sqm.

## ENVIRONMENT AND SOCIAL RESPONSIBILITY

At Kasthall environmental work is a very natural part of what we do and what we stand for – today and for generations to come. Naturally we are certified according to the environmental standard ISO14001, and many of our products bear the symbols of LEED, BASTA etc. These certificates confirm our continuous efforts. All our rugs are made to order in Sweden, using the finest renewable natural materials. Our working environment reflects the creativity and quality that we strive for – in design, materials and manufacture. Read more about our environmental work and philosophy at [kasthall.com](http://kasthall.com)



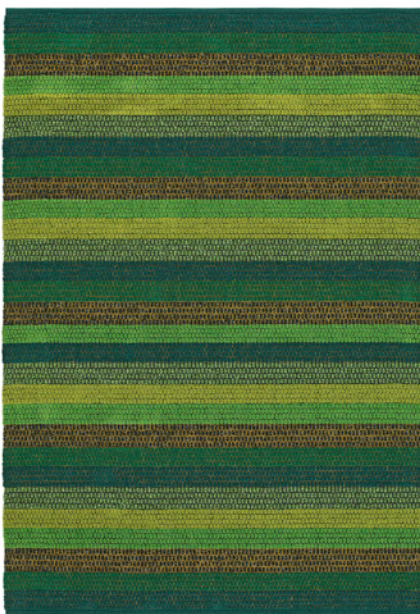
Harmony 8001



Winter Night 5001



Passion 1001



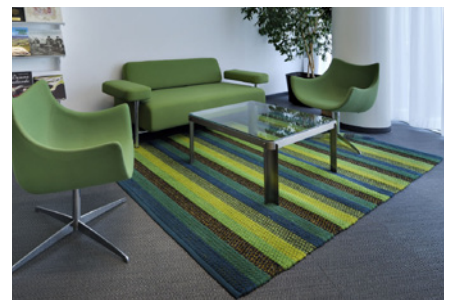
Summer Holiday 3001



Potato Digging 7001



Palazzo Lombardia, Milan – Happy Winter Night 5001



Palazzo Lombardia, Milan – Happy Summer Holiday 3001

---

*Showrooms in MILAN • NEW YORK • STOCKHOLM • GOTHENBURG*

**KASTHALL HQ SWEDEN**

Phone +46 320 20 59 00, Fax +46 320 20 59 01  
Fritslavägen 42, Box 254, SE-511 23 Kinna, Sweden  
info@kasthall.se

For the latest updates of our collection, please visit [www.kasthall.com](http://www.kasthall.com)

All the designs shown here are protected under law. Kasthall have the property rights and distribution rights worldwide. Copying will be prosecuted.



**KASTHALL**