



CREATE YOUR OWN *unique*
WALL-TO-WALL CARPET WITH Kasthall

WITH *low minimum quantities*, YOU CAN ALWAYS ADD A *unique twist* TO YOUR PROJECT



CREATE A *customized* WALL-TO-WALL CARPET TO INCREASE CLIENT SATISFACTION AND THE EXPERIENCE FOR THE END USERS.

- Custom designs from as little as 50 square meters - choose a custom colour or a unique pattern, or both.
- Roll widths from 100 up to 400cm offers flexibility for installment.
- We match any colour – choose between solid colours or sophisticated mélange colour blends.
- Tested and approved for commercial use.
- Match with our unique hand-tufted and hand-woven area rugs for an integrated look throughout the project, some of which can also be used as exclusive wall-to-wall carpets – see www.kasthall.com for more information.
- Choose between tufted and woven wall-to-wall carpets, with their different characteristics.

LET US HELP YOU CREATE A NEW *unique expression* OR MATCH AN EXISTING INTERIOR!



UNIVERSITY OF UPPSALA - *Custom design (woven)*



OPERABAREN Exclusive bar - *Custom design (tufted)*

Woven carpets – unique features:

- Durable construction in 80% wool and 20% polyamide
- Possible to create perfectly matched mélange colour blends
- Well suited for small scale geometric patterns
- Option to choose between cut pile, bouclé (loop) pile, or a combination
- Approved for use of castor wheels
- Excellent for hotels, restaurants and executive offices

Tufted carpets – unique features:

- Sumptuous thick pile in 100% wool
- Up to six different solid colours in each design
- Well suited for large scale, organic patterns
- Offer the possibility to add a border to the design
- Approved for continuous use of castor wheels and for stairs
- Excellent for offices and hotel corridors

Inspiration WALL-TO-WALL



OPERA KÄLLAREN Restaurant - Kasthall design: Claesson Koivisto Rune: *Pinstripe* (woven)



STOCKHOLM CITY HALL - Custom design (woven)



BERGMAN OF SWEDEN Office - Kasthall design: *Flora* (tufted pattern) and *Mylla* (woven bouclé mélange colour blend)



BORÅS THEATRE - Custom design (woven)



OMX Office - Patchwork of Kasthall design by Claesson Koivisto Rune: *Pinstripe* (woven)



AVALON HOTEL - Custom colour blend (woven) complemented by a customized border of Kasthall's hand tufted long-pile rug Moss



KASTHALL

Kasthall PATTERNS

Woven



FRANK *cut pile*



DOTTIE *cut pile*



BLOC *cut/loop pile*



PINSTRIPE *cut pile*



STEVE *cut pile, melange colour blend*



PAUL *cut/loop pile*



POPPY *cut pile*

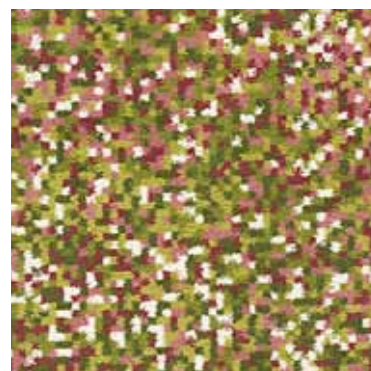


MYLLA *loop pile*

Tufted

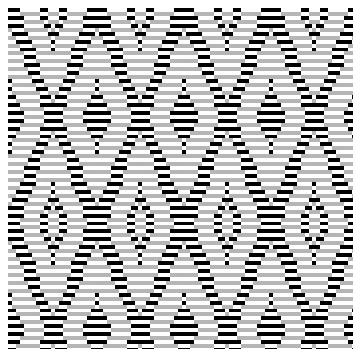


PRIMULA *cut pile*

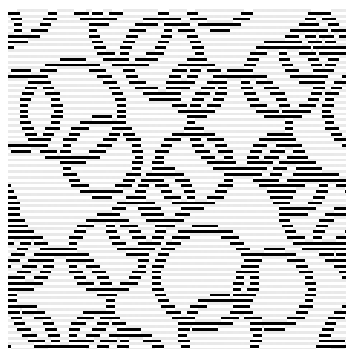


FLORA *cut pile*

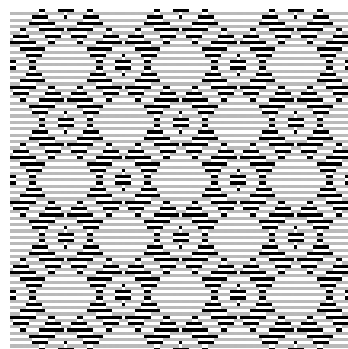
Woven



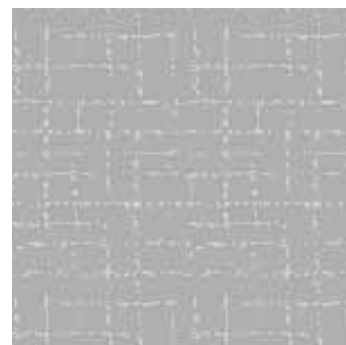
HARLEKIN 14



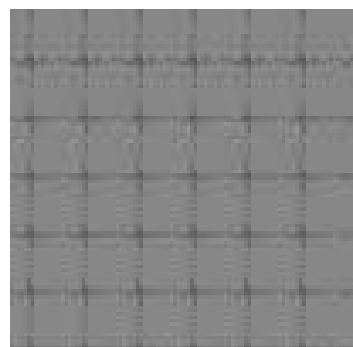
CIRCLES 20



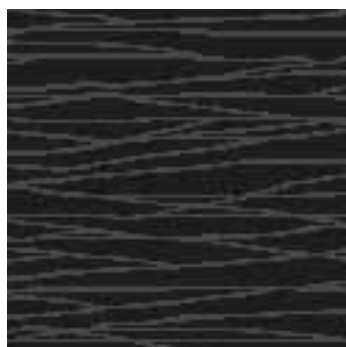
PLAIT 35



DIFFUSE 40



CHECK 52

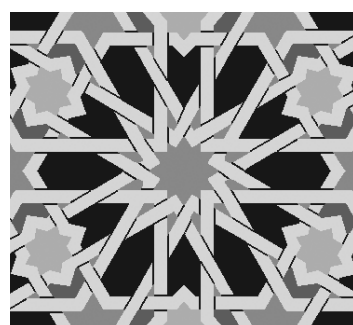


ZEBRA 64

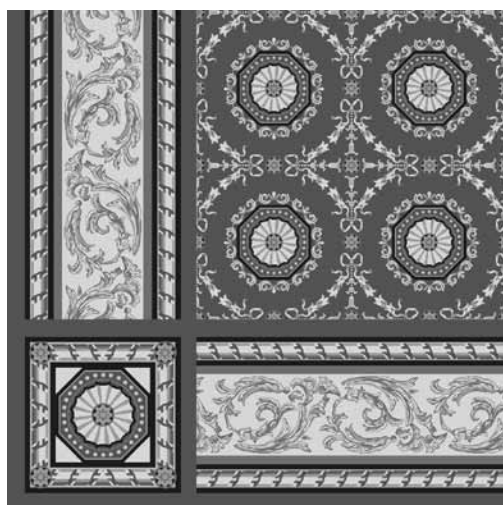


VINE 96

Tufted



MOSAIC 8



ROYAL 7

COLOUR *Inspiration*

Design PETRA LUNDBLAD-FRIDÉN

Herbal Green



PRIMULA



POPPY



PAUL



FRANK



DOTTIE



STEVE

Teak



PRIMULA



POPPY



PAUL



FRANK



DOTTIE



STEVE

COLOUR *Inspiration*

Design PETRA LUNDBLAD-FRIDÉN



KASTHALL

Graphic Grey



PRIMULA



POPPY



PAUL



FRANK



DOTTIE



STEVE

Rusted Copper



PRIMULA



POPPY



PAUL



FRANK



DOTTIE



STEVE - Rust



STEVE - Turquoise

COLOUR *Inspiration*

Design PETRA LUNDBLAD-FRIDÉN

Velvet Pink



PRIMULA



POPPY



PAUL



FRANK



STEVE

Retro Red



POPPY



PAUL

TECHNICAL SPECIFICATIONS

DOTTIE, FRANK, POPPY, PINSTRIPE, STEVE

DOTTIE: Little Dottie is the icing on the cake! As a strictly small dot, she adds character in most environments.

FRANK: The architect Frank Lloyd Wright's design has inspired Petra for this herringbone pattern. A wall to wall carpet with a style that oozes teak and cigar!

POPPY: Poppy is inspired of the 60's and the dots are influenced from our woven rug Doris. A playful pattern that creates harmony and a "retro" expression.

PINSTRIPE: A carpet with a subtle hand-drawn pinstripe pattern that creates an impression that is both elegant and relaxed at the same time.

STEVE: Steve has a beautiful iridescent melange surface and with its suave expression creates tranquility and adds atmosphere to any setting.

Product type: Woven wall-to-wall carpet

Pile material: 80% wool, 20% polyamide (antistatic)

Adhesive: Resine (Pinstripe: Latex)

Pile height: approx. 6,5 mm

Pile weight: approx. 1515 g/m² (Poppy approx. 1815 g/m²), (Pinstripe approx. 1500 g/m²), (Steve: approx. 1255 g/m²)

Total height: approx. 8,5 mm

Total weight: approx. 3015 g/m² (Poppy approx. 3315 g/m²), (Pinstripe approx. 3000 g/m²), (Steve: approx. 2755 g/m²)

Roll width: approx. 100, 200, 300 or 400 cm

Roll length: according to your request (Minimum roll quantity 50 running meters)



Burning classification:
(EN 13501-1) Bfl-s1



Slip resistance: DS



ASTM D 2859-06 (Meets the requirements)
ASTM E 648-06a (1,02 Wcm²)



Suitable for Castor chair:
(EN 985) Occasional use



Wear classification:
(EN 1307) Class 32 Commercial General



Luxury class:
LC 4 Luxurious



(EN 1307) Class 23 Domestic Heavy

Sound insulation: (ISO 11654) Class D

BLOC, PAUL

BLOC: The Wilton-woven wall-to-wall carpet have a beautiful relief pattern that is created when you combine a cut surface with bouclé. The design is inspired by corduroy.

PAUL: The sophisticated and masculine Paul is inspired from the world of fashion and Paul Smith. A classic stripe, modified with a combination of a bouclé and cut pile.

Product type: Woven wall-to-wall carpet

Pile material: 100% wool

Adhesive: Bloc: Latex, Paul: Resine

Pile height: approx. 5-6,5 mm

Pile weight: approx. 1210 g/m²

Total height: approx. 7-8,5 mm

Total weight: approx. 2710 g/m²

Roll width: approx. 100, 200, 300 or 400 cm

Roll length: according to your request (Minimum roll quantity 50 running meters)

TECHNICAL SPECIFICATIONS



Burning classification:
(EN 13501-1) Bfl-s1



Slip resistance: DS



ASTM D 2859-01 (Meets the requirements)
ASTM E 648-03 (0,78 W/cm²)
ASTM E 662, ASTM E 84 (Classification C)



Luxury class:
LC 4 Luxurious



Wear classification:
(EN 1307) Class 22 Domestic General/Medium

MYLLA

Mylla is an elegant multi-coloured wilton-woven bouclé carpet. Its texture and colour combinations are inspired by the soil in the earth, and brings your thoughts to nature, forests and wilderness.

Product type: Woven wall-to-wall carpet, bouclé

Pile material: 100% wool

Adhesive: Latex/resine

Pile height: approx. 6 mm

Pile weight: approx. 1440 g/m²

Total height: approx. 8mm

Total weight: approx. 2960 g/m²

Roll width: approx. 100, 200, 300 or 400 cm

Roll length: according to your request (Minimum roll quantity 50 running metres)



Burning classification:
(EN 13501-1) Bfl-s1



Slip resistance:
DS



ASTM E 648-06a (1,06 W/cm²)



Suitable for Castor chair:
(EN 985) Occasional use



Wear classification:
(EN 1307) Class 33 Commercial Heavy



Luxury class:
LC 4 (Luxury)

TECHNICAL SPECIFICATIONS

FLORA, PRIMULA

FLORA: Flora is a tufted wall-to-wall carpet with a colourful pixelated pattern. Fields of wild flowers are the source of inspiration for this bold carpet, and the impression it creates is a lively yet harmonic surface.

PRIMULA: A floral explosion that has its roots in the Kasthall extensive design archive. Initially constructed in 1971 for Grand Hotel in Borås and now again in full bloom with an updated colour scheme.

Product type: Tufted wall-to-wall carpet

Pile material: 100% wool

Adhesive: Action back PP

Pile height: approx. 10 mm

Pile weight: approx. 2150 g/m²

Total height: approx. 12 mm

Total weight: approx. 3650 g/m²

Roll width: approx. 400 cm

Roll length: according to your request (Minimum roll quantity 12,5 running metres, (50m²))



Burning classification:
(EN 13501-1) Bfl-s1



Slip resistance: DS



ASTM D 2859-06 (Meets the requirements)
ASTM E 648-06a (0,91 W/cm²)



Suitable for Castor chair:
(EN 985) Continuous use



Wear classification:
(EN 1307) Class 32 Commercial General



Luxury class:
LC 5 Prestige



(EN 1307) Class 23 Domestic Heavy



Stair suitability:
Continuous use

ENVIRONMENTAL POLICY:

Kasthall is ISO 14001 certified.

CARE ADVICE:

We recommend professional cleaning only. For more information, see separate care instructions or visit:
www.kasthall.com.

OTHER INFORMATION:

- Dimensions may vary by up to ±3%.
- Please note that variations in colour and texture can arise between different yarn batches and dye baths.

Showrooms in: MILAN • NEW YORK • STOCKHOLM • GOTHENBURG

Kasthall Head Quarter

TELEPHONE +46(0)320 205900, FAX +46(0)320 205901

FRITSLAVÄGEN 42, BOX 254

SE-511 23 KINNA, SWEDEN

E-MAIL: info@kasthall.se

For the latest updates of our collection, please visit www.kasthall.com

All the designs shown here are protected under law. Kasthall have the property rights and distribution rights worldwide. Copying will be prosecuted.